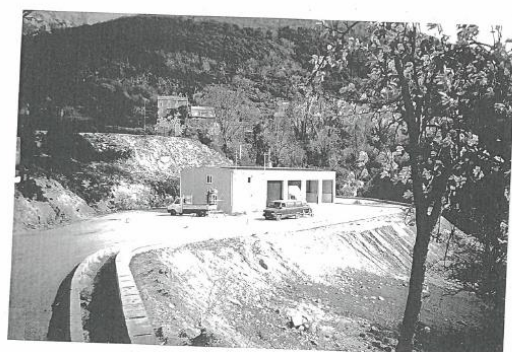
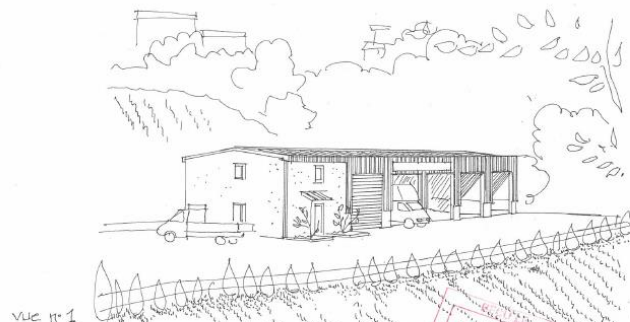
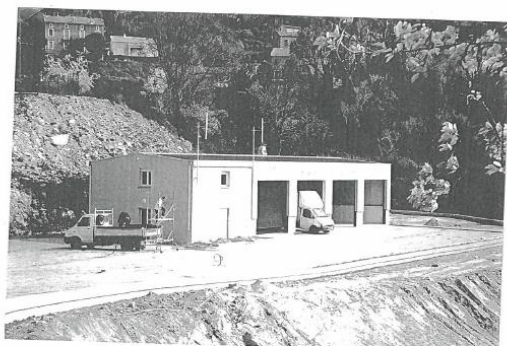


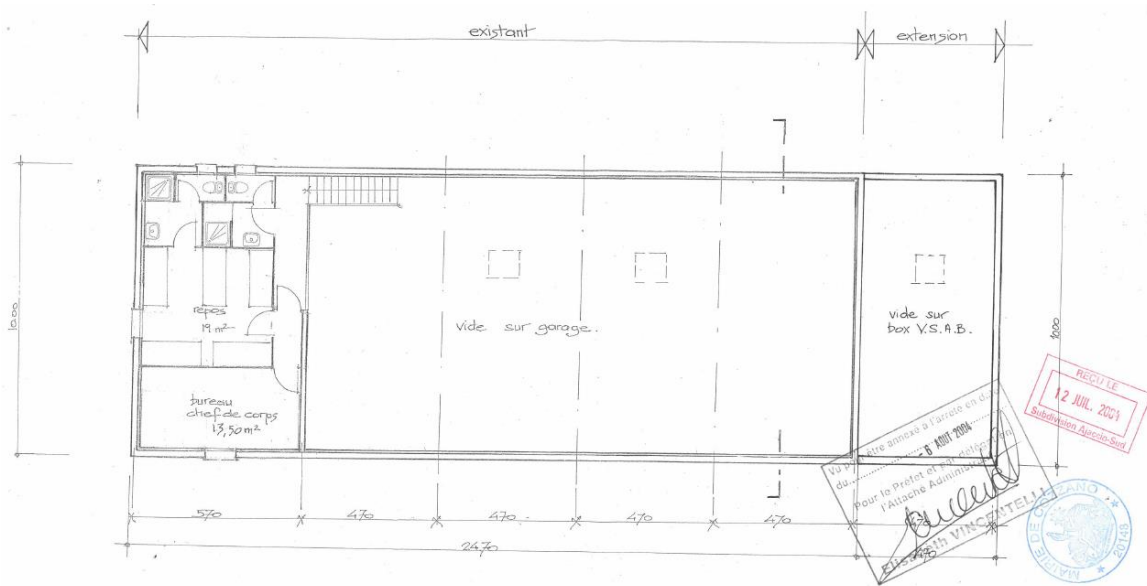
Projet réalisé

Construction du centre de secours

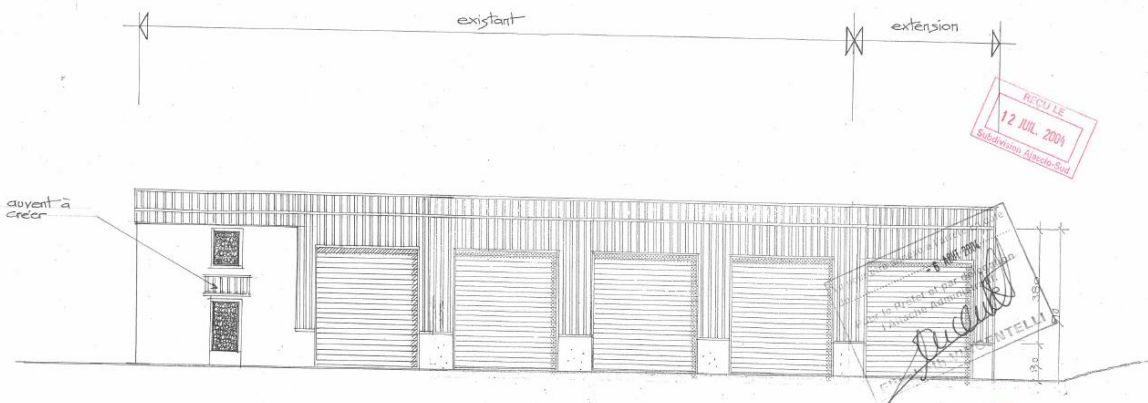


Montant total des travaux : 1 500 000,00 Francs.

Inauguré en 2001.



plan de l'étage en mezzanine
ech: 1/100



façade ouest. ech: 1/100.



VAUCHER ARCHITECTE
ARCHITECTE D.P.L.G.
E. Corps Gr. Sup.
20000 AJACCIO
TÉLÉPHONE 4-90-000000